

Chickasaw Co. Recorder
 Cindy Messersmith
Fee Book 2014-0678
 05/28/2014 @0233PM
 SCC: SEC COR CERT # Pages: 1
 Book: Page:
 Total Fees: \$7.00

Prepared by & Return to: Herold - Reicks Surveying, 10 East Main Street, New Hampton, IA 50659, Ph. 641-394-2725

UNITED STATES PUBLIC LAND SURVEY CORNER CERTIFICATE

Land Survey Monuments situated in Section ²⁶ 35, Township 97 North, Range 13 West of the Fifth Principal Meridian, Chickasaw County, Iowa. 1.) Not previously recorded in the County Recorder's office.
 2.) Previously recorded in Bk. 152, Pg. 450, in the County Recorder's office.

This certificate is being prepared in compliance with Iowa Code Chapter 355.11 because:

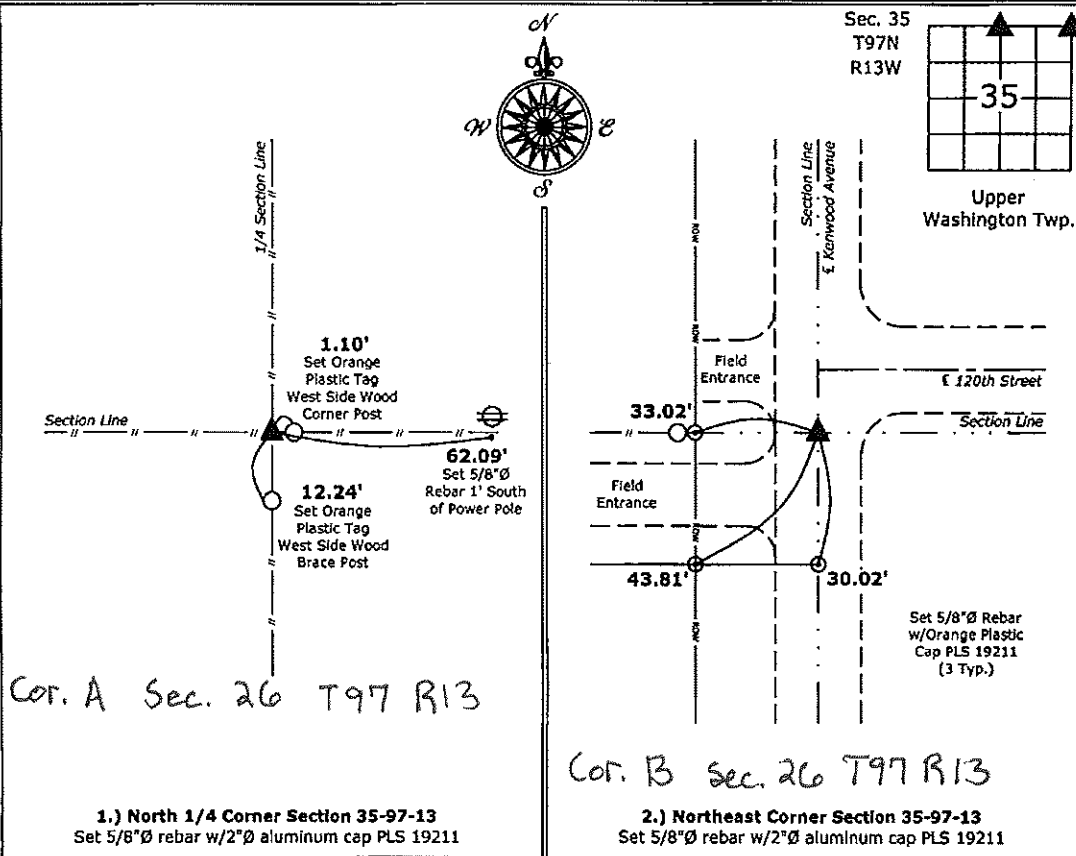
- There is no certificate on file for this corner.
- There are no longer three valid ties of record.
- There are changes to reference ties of record.
- There is change of monumentation of record.
- To clarify description of record monument (ties).

Monument Description and Remarks:

- 1.) **North 1/4 Corner:** Set 5/8"Ø rebar with 2"Ø aluminum cap PLS 19211 at an existing fence corner after comparing distances to adjacent corners. There are no records of the perpetuation of a monument at this Corner.
- 2.) **Northeast Corner:** Set 5/8"Ø rebar with 2"Ø aluminum cap PLS 19211 at record distance from the East 1/4 Corner of Section 26 Township 97 Range 13, per Survey and Plat made by Robert L. Haylock, recorded in Book 152, Page 447 on file in the Chickasaw County Recorder's office, New Hampton Iowa.

PLAN - VIEW

(Show a minimum of three reference ties to durable physical objects, relevant monuments and physical conditions that will enable recovery of the corner.)



I hereby certify that this land surveying document was prepared and the related survey work was performed by me or under my direct personal supervision and that I am a duly licensed Land Surveyor under the laws of the State of Iowa.

Kirk D. Reicks 5-28-14
 Kirk D. Reicks Date:
 License number 19211
 My license renewal date is December 31, 2014.
 Sheets covered by this seal: Individual sheet only

List Corners to be Indexed			
Corners	Section	Twp.	Range
N 1/4	35	97	13
NE	35	97	13

Project Number: 2014-098
 FB: Chickasaw 6, Pgs. 37-38

File: S:_C3D Projects\County Control Systems\CHICKASAW\CHICK-4.dwg, 5/17/2014 6:59:18 AM