



Prepared by: Kyle A. Johnson Address: 1900 MEDICAL ARTS AVE S, SUITE 100 SARTELL, MN Phone: 1-888-937-5150

UNITED STATES PUBLIC LAND SURVEY CORNER CERTIFICATE FOR

Land survey monuments situated in Section 36, Township 97 NORTH
 Range 13 WEST, of the Fifth Principal Meridian, CHICKASAW County, Iowa.

Previously Recorded in _____ in County Recorder's Office.

(Show reason for preparing this certificate, the evidence and detailed procedures used in establishing the corner positions and monumentation found or placed.)

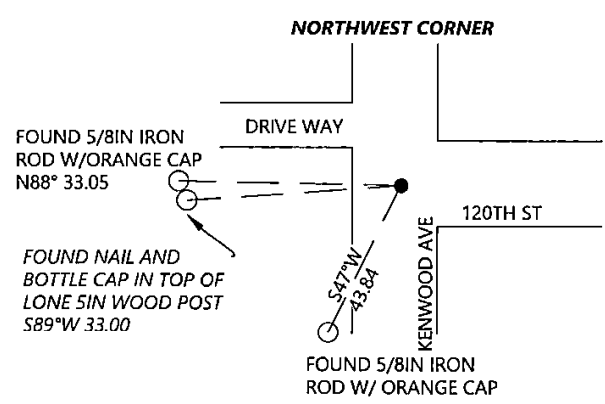
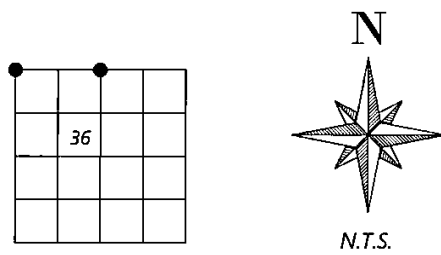
MONUMENT DESCRIPTION AND REMARKS:

NORTH QUARTER: Westwood Professional Services found a 5/8" rebar with cap LS9018 0.4' deep and 2 ties per 2000 record. Accepting corner location and set 1 tie. Filing corner record as there are no longer 3 valid ties of record.

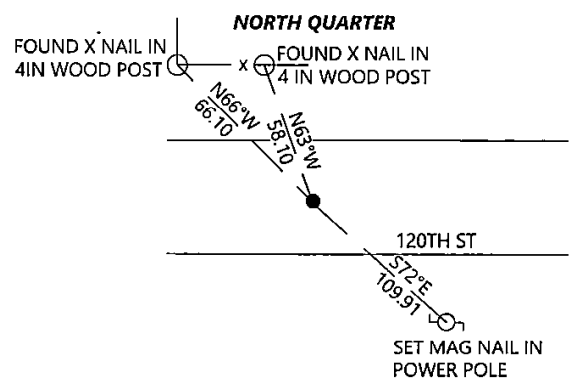
NORTHWEST CORNER: Westwood Professional Services found a 5/8" rebar with 2" aluminum cap LS19211 0.5' below the road surface, found 2 ties per 2014 corner record, and 1 tie per engineers tie. Accepting corner location. Filing corner record as there are no longer three valid ties of record.

PLAN - VIEW

(Show a minimum of three reference ties to durable physical objects, relevant monuments and physical conditions that will enable recovery of the corner.)



Cor. B 35-97-13



Cor. A 25-97-13



I hereby certify that this land surveying document was prepared and the related survey work was performed by me or under my direct personal supervision and that I am a duly licensed Land Surveyor under the laws of the state of Iowa.

Kyle Johnson 10/14/2022
 Signature Date
 Typed/Printed Name: Kyle A. Johnson
 License Number: 25725
 My license renewal date is December 31, 2022
 Pages or sheets covered by this seal: THIS SHEET

Corners to be Indexed

Corners	Section	Twp.	Range
NQ	36	97	13
NW	36	97	13

Prepared by: Kyle A. Johnson Address: 1900 MEDICAL ARTS AVE S, SUITE 100 SARTELL, MN Phone: 1-888-937-5150

UNITED STATES PUBLIC LAND SURVEY CORNER CERTIFICATE FOR

Land survey monuments situated in Section 36, Township 97 NORTH
 Range 13 WEST, of the Fifth Principal Meridian, CHICKASAW County, Iowa.
 Previously Recorded in _____ in County Recorder's Office.

(Show reason for preparing this certificate, the evidence and detailed procedures used in establishing the corner positions and monumentation found or placed.)

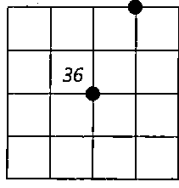
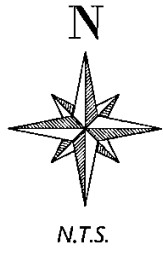
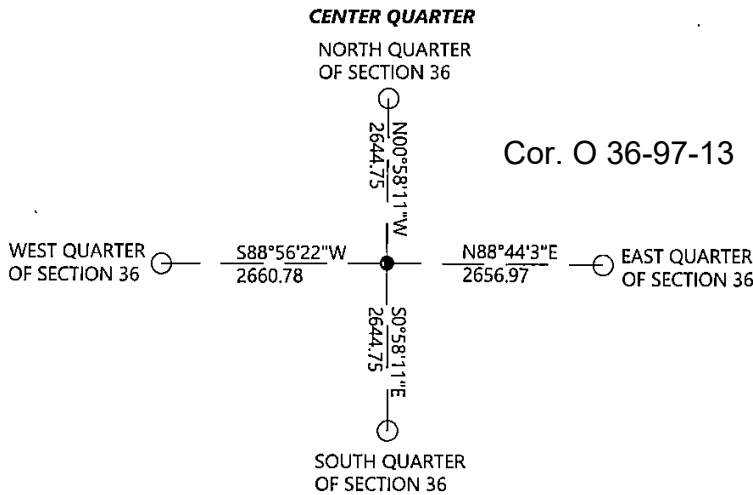
MONUMENT DESCRIPTION AND REMARKS:

EAST 16TH CORNER BETWEEN SEC. 25 + 36: Westwood Professional Services found a 1/2" iron with cap LS9018 0.6' deep and 2 ties per 2000 record. Accepting corner location and set 1 tie. Filing corner record as there are no longer 3 valid ties of record.

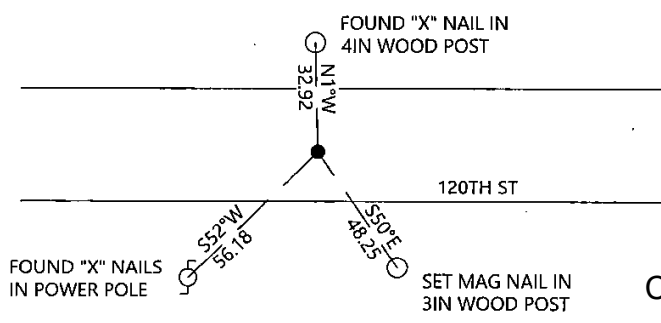
CENTER QUARTER: Westwood Professional Services found a 14x18" stone firmly planted on south side of old lone fence post. Distances from engineers tie book agrees closely with measured distance. Holding stone as the best available evidence of the corner location. Filing corner record as there is no certificate on file for this corner.

PLAN - VIEW

(Show a minimum of three reference ties to durable physical objects, relevant monuments and physical conditions that will enable recovery of the corner.)



EAST 16TH CORNER BETWEEN SEC. 25 + 36



Cor. A1 25-97-13



I hereby certify that this land surveying document was prepared and the related survey work was performed by me or under my direct personal supervision and that I am a duly licensed Land Surveyor under the laws of the state of Iowa.

Kyle Johnson 10/4/2022
 Signature Date

Typed/Printed Name: Kyle A. Johnson

License Number: 25725

My license renewal date is December 31, 2022

Pages or sheets covered by this seal: THIS SHEET

Corners to be Indexed

Corners	Section	Twp.	Range
E16	36	97	13
CQ	36	97	13